



HELLENIC REPUBLIC

**National and Kapodistrian  
University of Athens**

— EST. 1837 —

SCHOOL OF LAW

DEPARTMENT OF INTERNATIONAL STUDIES

**LL.M. in International & European Law**

---

- LL.M. Thesis Guide

---

## TABLE OF CONTENTS

---

1. Purpose and Learning results	3
2. Assignment and Approval of the LL.M. Thesis	3
3. The Supervisor and the Three-Member Examination Committee	3
4. The Drafting Process of the LL.M. Thesis	4
5. The Structure of the LL.M. Thesis	5
6. Electronic Resources	6
<i>VPN</i>	6
7. Turnitin	7
<i>Turnitin: Draft Coach</i>	8
<i>The Similarity Report</i>	9
<i>Annex 1</i>	11
<i>Annex 2</i>	12
<i>Annex 3</i>	14
<i>Annex 4</i>	16

## **1. Purpose and Learning results**

---

The dissertation provides an opportunity to combine and apply the knowledge acquired during the studies. The basic and necessary characteristic of the thesis is originality, which marks a significant added value to the acquired knowledge and reflects the personal contribution and ability of the student. Originality may refer to filling a gap in the literature and/or drawing new conclusions to old or recurring issues.

Having completed the postgraduate thesis, the student:

- has studied in depth a specific topic in the LL.M.'s specialization areas;
- has applied the relevant knowledge obtained from the course and has developed analytical and synthetic skills;
- has learnt to search for appropriate scientific information from the relevant bibliography;
- has acquired skills in writing academic texts; and
- has developed skills in organizing and orally presenting the topic of the dissertation.

## **2. Assignment and Approval of the LL.M. Thesis**

---

The LL.M. thesis is assigned in the spring semester and must be submitted no later than 30 September of the year in which the second semester is taught. The student must submit the thesis with a "declaration of non-Infringement of Intellectual property rights" (*see Annex 4*). The thesis must be individual, original and research-based. The student submits the proposed title of the thesis, the name of the supervisor, and an abstract of the proposed thesis. The Faculty Assembly appoints the supervisor and the members of the three-member Examination Committee. The language of the thesis is English. The title of the thesis may be finalized upon application of the student to the Steering Committee of the Programme, and the agreement of the supervisor. For the thesis to be approved, the student must present and defend it before the three-member examination committee. If approved by the Examination committee, the LL.M. thesis, will be published in the digital repository "PERGAMOS", according to the decisions of the Senate of the National and Kapodistrian University of Athens (NKUA). At the request of the supervisor and the student, if the thesis contains unpublished original results, only the abstracts may be published. The full text of the thesis will be published on a later date.

## **3. The Supervisor and the Three-Member Examination Committee**

---

The Supervisor and the members of the three-member Examination Committee are appointed from the following categories that provide educational work in the Programme:

- a) Members of Teaching Research Staff, Special Teaching Staff, Laboratory Teaching Staff and Special Technical Laboratory Staff of the School or other Departments of

- the Institution or other Higher Educational Institution with additional employment beyond their legal obligations, if the Programme has tuition fees,
- b) Emeritus Professors or retired members of the Faculty, or other Departments, or other Institutes of the National Academy of Sciences or other higher education institutions,
  - c) Cooperating Professors,
  - d) Appointed Teaching Staff,
  - e) Visiting Professors or Visiting Researchers,
  - f) Researchers and special functional scientists of research and technological institutions as provided for under Article 13A of Law No. 4310/2014 (A' 258) or other research centres and institutes of the country or abroad.
- By decision of the Assembly, the supervision of thesis may also be assigned to members of the Department who have not undertaken teaching duties in the Programme.

#### **4. The Drafting Process of the LL.M. Thesis**

---

##### **a) Finding a topic**

Inspiration for choosing the LL.M. thesis topic may be drawn from lectures in the course, discussions with faculty members, and staff providing educational work in the LL.M., literature, current events as well as the student's personal interests. The nature of the topic should allow the student to approach it with as much originality as possible. This will add merit to the thesis. In all cases, in order to complete the thesis within the required time frame, the topic should be tailored to the student's abilities and skills.

##### **b) Contact with faculty members and academic staff**

The purpose of this contact is to discuss the topic and to receive guidance from the supervisor on the precise definition and scoping of the topic.

##### **c) Identification of the topic**

The type of study, the objectives, the methodology, the research hypotheses, the identification of the necessary resources, the timeframe and the limitations of the work should be decided.

##### **d) Submission of the thesis proposal including**

- The title
- The objectives
- The bibliographic documentation
- The structure of the thesis
- Detailed timetable
- Potential limitations
- Ways to overcome these limitations

### e) Preparation/Drafting of the thesis

The Thesis is divided into the following parts:

- The introduction, which identifies the topic to be analysed, the reasons for studying the topic, its importance (e.g. for science or society, the international community), the methodology for developing the topic and the expected results or conclusions (in general).
- The theoretical part, which includes the review of literature/articles, i.e. the theoretical framework of the topic.
- The results of the research, which will lead to accepting or rejecting the research hypotheses, the relationship between the issues studied and the presentation of the conclusions based on the empirical evidence.
- Conclusions and recommendations for further research.

### f) Timeline

- **4 April 2026**: Submission of the topic of the LL.M. Thesis (upon consultation with academic staff members) (*see Annex 1*)
- **29 May 2026**: Submission of outline and research plan to supervisor (*see Annex 2*)
- **30 September 2026**: Submission of LL.M. Thesis

## 5. The Structure of the LL.M. Thesis

---

### Order of tasks:

- Template of the LL.M. Thesis cover page (*see Annex 3*)
- Acknowledgements (optional)
- Contents
- Main text (introduction, main body, conclusions, etc.)
- Annexes (if any)
- Bibliography

### Thesis formatting:

- Font: Times New Roman
- Text font size: 12 pt with 1.15 line spacing
- Footnote font size: 10 pt with 1 pt line spacing
- Page size: A4 double-sided
- Margins: 2 cm (top, bottom, right), 2,5 cm left - Alignment: full
- Word-limit: 20,000 - 30,000 words
- Citations and bibliography format: The Oxford Standard for Citation of Legal Authorities (OSCOLA) (currently in its fourth edition) is the main source of authority you need to follow. OSCOLA uses footnotes at the bottom of each page for in-text citation, with full references organised in a bibliography at the end of the document and grouped according to different types of sources.

The full guidance is available in the OSCOLA 4th edition available at

[https://www.law.ox.ac.uk/sites/default/files/migrated/oscola\\_4th\\_edn\\_hart\\_2012.pdf](https://www.law.ox.ac.uk/sites/default/files/migrated/oscola_4th_edn_hart_2012.pdf)

For international law sources, see:

[https://www.law.ox.ac.uk/sites/files/oxlaw/oscola\\_2006\\_citing\\_international\\_law.pdf](https://www.law.ox.ac.uk/sites/files/oxlaw/oscola_2006_citing_international_law.pdf).

For the quick reference guide, see:

[https://www.law.ox.ac.uk/sites/default/files/migrated/oscola\\_4th\\_edn\\_hart\\_2012quickreferenceguide.pdf](https://www.law.ox.ac.uk/sites/default/files/migrated/oscola_4th_edn_hart_2012quickreferenceguide.pdf)

## 6. Electronic Resources

---

The Library and Information Center of NKUA, uses ProQuest's **Summon Discovery Service**, in order to provide a Unified Search Engine for its e-resources. Summon, is a "discovery" search engine which, by using its own index (updated twice a week), performs a unified search (simultaneous but not in real-time like in a federated search manner) in a multitude of online e-resources.

### [Connect to the Unified Search Engine.](#)

Access to the electronic Legal databases at:

<https://law.lib.uoa.gr/ypiresies/baseis-nomikon-dedomenon.html> (GR) |

<https://www-en.lib.uoa.gr/services/bibliographic-databases/nkua-subscriptions.html> (EN)

Full access to subscribed electronic databases such as Unified Search Engines, E-Books, E-Journals, bibliographic databases and other E-Resources, is provided **only through the NKUA IP network (VPN)**.

- **VPN**

The Virtual Private Network (VPN) connection service provides all members of the University Community with the ability to connect to the local networks and infrastructure of the National and Kapodistrian University of Athens from any location (network) outside the University, even from abroad.

The service implements an encrypted, secure, virtual communication channel between the user's personal computer and the internal network of the NKUA and obtains IP addresses from the University's address pool. One of the features of the Virtual Private Network service is the **access to the electronic libraries of the NKUA from networks outside the NKUA**.

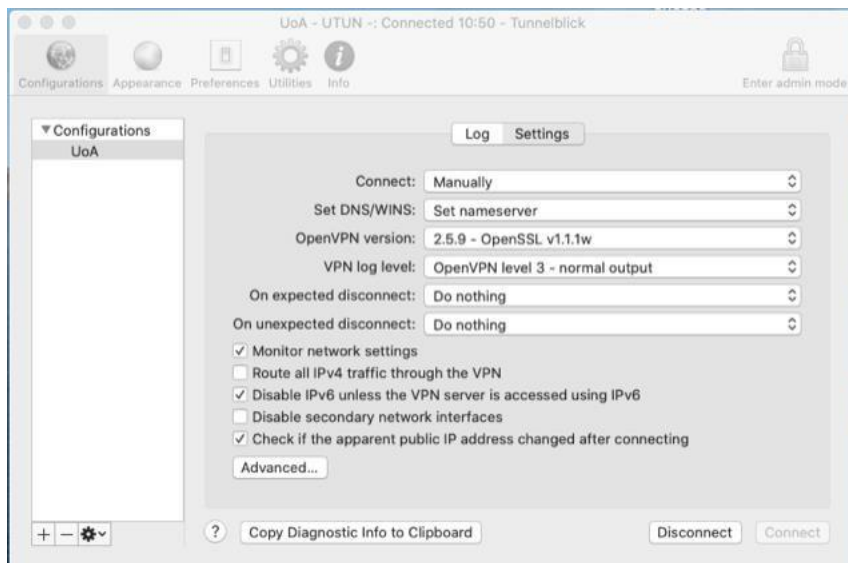
- Detailed Installation and Usage Instructions

- [Windows](#)
- [Android](#)
- [Apple MacOS X](#)
- [Usage Instructions](#)

*\*If your software is an Apple MacOS X, you may need to change the following settings:*

First, right-click on the Tunnelblick icon in the taskbar. Then select settings.

In the third line of the tunnelblick interface change: OpenVPN version to → 2.5.9 - OpenSSL v1.1.1w



## 7. Turnitin

---

Following the needs of the academic community, the NKUA has annual subscription to Turnitin. Turnitin database checks submitted documents and student's papers with the content of other websites aiming to identify plagiarism. In this context, Turnitin, aside from using internet sources, can detect plagiarism to papers submitted to the database, as well as in publisher's content not accessible via the internet, (using Crossref). The LL.M. in International and European Law checks the papers submitted by students in the context of coursework, such as essays or dissertations for both originality and plagiarism through Turnitin.

Students with an institutional account at the NKUA have access to the [Draft Coach](#), a feature allows them to check their work for plagiarism and to check references and grammar (for the English language) through the Google Docs platform.

- **Turnitin: Draft Coach**

Draft Coach can be used from the Google Docs platform after logging in to Google (from the link <https://accounts.google.com/>), using an account of the form [username@uoa.gr](mailto:username@uoa.gr) (**DO NOT** use [username@law.uoa.gr](mailto:username@law.uoa.gr)). Also, do not worry about the Google Meet login report if appears. The process is the same. If Google informs you that it cannot find the specific account, choose to create one by following the instructions and the relevant messages that will appear).

**Be careful when using Draft Coach, as it checks up to 3 times per document.**

More information about Draft Coach can be found in the links below:

- [Turnitin Draft Coach™ FAQ](#)
- [Adding Draft Coach to a Google Doc](#)
- [Understanding your Draft Coach reports](#)

- **The Similarity Report**

- **SIMILARITY PERCENTAGE SCORE – BRIGHTSPACE ASSIGNMENT SUBMISSION TABLE**

The **Similarity Percentage Score** that is displayed on the **Assignment's** main submission page under **Turnitin Similarity Report** column has a color indicator, which specifies the amount of matching text found. This percentage is calculated by dividing the number of matching words by the total number of words in the document. The percentage range is 0% to 100%.

The colors for similarity ranges are:

TITLE	SIMILARITY
Submission	0% 
Submission	6% 
Submission	43% 
Submission	58% 
Submission	80% 

- **Blue:** No matching text
- **Green:** 1% -24% matching text
- **Yellow:** 25-49% matching text
- **Orange:** 50-74% matching text
- **Red:** 75-100% matching text

- ❖ **LOW VALUE SCORES**

Depending on the **Turnitin** setting selections made during setup could indicate that:

- The work has no references or little to no direct quotes.
- Turnitin cannot recognize the text.

- ❖ **HIGH VALUE SCORES**

Depending on the **Turnitin** setting selections made during setup could indicate that:

- An overreliance on quoting.
- Piecemeal work – cutting and pasting from other sources.

- ❖ **100% SCORE**

Depending on the **Turnitin** setting selections made during setup could indicate that:

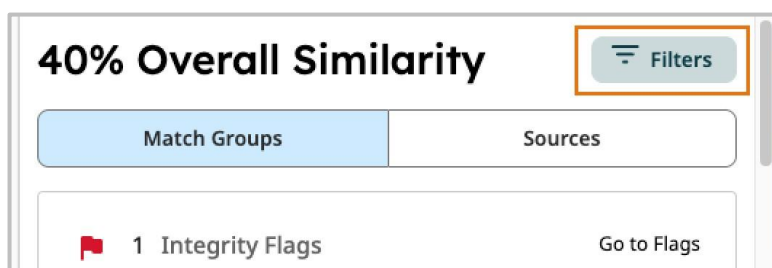
- No original work has been presented.
- The paper was previously submitted. Perhaps the student is making a re-submission.
- User error. The student submitted the assignment to another course or another assignment folder by mistake prior to making the submission to the correct course/folder.
- Collusion or copying from another student, either in the same course, from a previous course or other institution.

## ➤ FILTERS & EXCLUSIONS

You can use the filters and exclusion options to customize the **Similarity Report**. For example, excluding bibliography, quotations and small matches (i.e. common phrases or subject terminology) may remove some matches that are irrelevant, and display matches that require further attention.

### ❖ Filters

The filter button is located in the top right-hand corner of the **Overall Similarity** panel.

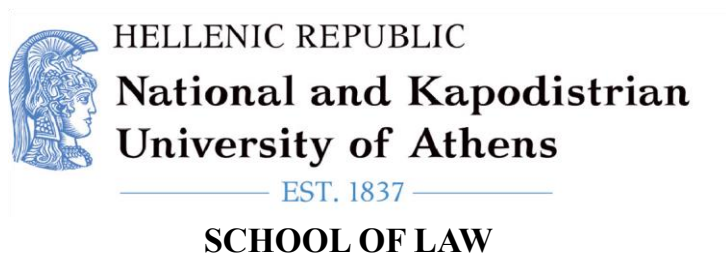


The following Compare submission against filters can be applied:

- **Student database** – The text will be compared with student submissions from all the institutions in the database.
- **Internet content**
- **Periodicals, journals and publications**

### ❖ The following **Exclusion filters** can be applied:

- **Exclude Bibliography:** Select this option to exclude text that appears in the bibliography, works cited, or referenced sections of student papers from being checked for matches when generating **Similarity Reports**.
- **Exclude quoted text:** Select this option to exclude quotations from being checked for matches when generating **Similarity Reports**.
- **Exclude cited text:** Select this option to exclude cited material. **Note:** The quoted part of citation material will still be included unless the “**Exclude quoted text**” option is also selected.



**APPLICATION FOR THESIS ASSIGNMENT**

TO THE SECRETARY OF THE  
«LL.M. In International & European Law»

SPECIALIZATION:

LAST NAME:

FIRST NAME:

REGISTRATION NUMBER:

TELEPHONE:

Email:

**Please approve the topic of my thesis**

TOPIC	SUPERVISOR

ATHENS, .../.../20..

---

## Research proposal and plan

---

*Supervisor:*

### Mandatory elements

You may use the following format:

Name:  Student number:  E-mail:  telephone number:
Anticipated deadlines (Optional/to be discussed; (at least) 2 supervision meetings):     
Title/subtitle (provisional):     
Problem statement:          

Research question:

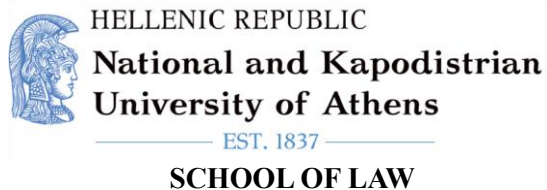
Sub-questions:

Short description of your research (plan), the research method(s) and the coherence between the research question and the sub-questions:

Structure (provisional):

Table of contents (indicative):

Bibliography (preliminary):



LL.M. IN INTERNATIONAL AND EUROPEAN LAW  
SPECIALIZATION: .....  
ACADEMIC YEAR: .....

**LL.M. THESIS**

**[First Name, Fathers Name, Last Name]**

**R.N.: .....**

**[Thesis Topic]**

**Examination Committee:**

- a) .....(Supervisor)
- b)
- c)

Athens, .....

Copyright © [*Name, Date of Publication*]

All rights reserved.

Copying, storage and distribution of this work, in whole or in part, for commercial purposes is prohibited. Reproduction, storage and distribution for non-profit, educational or research purposes is permitted, provided the source is acknowledged and this message is retained. The ideas and positions expressed in this paper are those of the author and should not be interpreted as representing the official positions of the National and Kapodistrian University of Athens.

**DECLARATION**  
**OF NON-INFRINGEMENT OF COPYRIGHT**

I declare responsibly that the thesis I am submitting does not contain any evidence of copyright infringement in accordance with the following terms which I have read and accept:

1. The thesis must be the work of the candidate who submits it.
2. Copying or paraphrasing a third party's work is an infringement of an intellectual property right and constitutes a serious offence, equivalent in severity to copying during the examination. This offence includes both infringing the intellectual property rights of another diploma candidate and copying from published sources such as books, papers or scientific articles. Plagiarised material may come from any source. Copying or using material from the Internet or an electronic encyclopaedia has the same adverse legal consequences as using material from a printed source or database.
3. The use of extracts from the work of third parties is acceptable provided that the source of the extract is acknowledged. In the case of verbatim quotations from the work of another, the use of quotation marks or a footnote is necessary so that the source of the quotation is acknowledged.
4. Paraphrasing text is an infringement of intellectual property rights.
5. The sources of the extracts used should be fully listed in a bibliography table at the end of the thesis.
6. Infringement of intellectual property rights is subject to sanctions. In determining the appropriate sanctions, the relevant School bodies will take into account factors such as the scope and size of the part of the thesis that constitutes an infringement of intellectual property rights. Sanctions will be imposed, following the opinion of the three-member examination committee by decision of the Faculty Assembly, and may consist of the zeroing of the thesis (with or without the possibility of resubmission), removal from the graduate student registers, and the imposition of disciplinary sanctions, such as the suspension of the student status of the diploma candidate.

In addition, I give my consent for an electronic copy of my thesis to be subjected to an electronic check to detect any evidence of copyright infringement.

Date

Candidate's Signature